



EMERGENCY BRAKE SWITCH NBS 550

Description

Emergency brake switches of type NBS 550 meet the high requirements of applicable railway specifications.

Passengers and train crew members can use emergency brake switches of type NBS 550 to trigger the emergency brake or an emergency stop.

After the activation handle is pulled, the emergency brake switch NBS 550 is locked. The unlocking can be carried out via a socket wrench¹⁾ or safety key¹⁾ depending on the model.

For this model, inscription is only possible via separate labelling¹⁾ close to the visible handle.

¹⁾ Not included in delivery

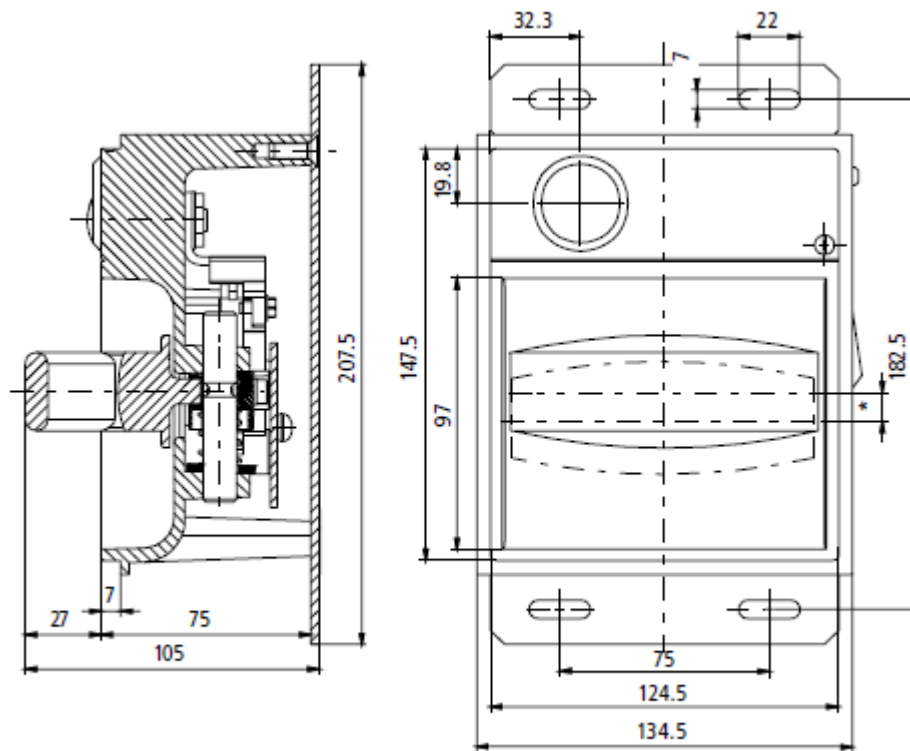
Technical Data

Type	NBS 550
Rated insulation voltage	DC 110 V +25/-30%
Ambient temperature	-25° C ... +70° C
Protection type	IP 00
Unlocking ¹⁾	Square bolt / closing cylinder
Contacts	2 NO 2 NC
Thermal current	10 A
Rated switching capacity (24 V / 110 V)²⁾	8 A/0,4 A
Connection	Faston plug 6.3 mm
Weight approx.	1.3 kg
Colour¹⁾ (housing / handle)	NCS 4005 R 80 B (grey) / RAL 0204050 (red)
Operating force approx.	80 N (without lead sealing)
Actuating height approx.	10 mm

1) To be specified when ordering

2) Inductive load

Dimensions



* Total travel: 10 mm

Kiepe Electric GmbH

Kiepe-Platz 1
40599 Düsseldorf
Tel: +49 211 7497-0
Fax: +49 211 7497-300
info@kiepe.knorr-bremse.com
www.kiepe.knorr-bremse.com



 **KNORR-BREMSE**

 **NEW YORK AIR BRAKE**

 **IFE**

 **MERAK**

 **MICROELETTRICA**

 **KIEPE ELECTRIC**

 **SELECTRON**

 **ZELISKO**

 **RAILSERVICES**